



FLOURISH HERE

For those that are looking to unwind, indulge, energize and explore... at Kiley you can do it all. Our studio, one, two, and three-bedroom apartments combine historic inspirations with a luxurious lifestyle. These pet-friendly DC apartments offer residents an elevated living experience with stunning Capitol views, state-of-the-art amenities, and designer details.

Inspired by the work of legendary landscape architect Dan Kiley, our luxury apartments in DC combine thoughtful amenities with an ideal location in the historic Southwest Waterfront neighborhood. Live life poolside on our rooftop, lounge amongst designer details in the courtyard, or enjoy an afternoon playing video games with friends and neighbors in our clubroom. Make yourself at home at Kiley.

NEIGHBORHOOD ATTRACTIONS

- 89 Walk Score
- Close to The Wharf
- Nearby Capitol Hill
- Walk To L'enfant Plaza Metro, Federal Center Sw Metro, And Waterfront Station Metro



APARTMENT FEATURES

- Luxury Plank Flooring
- Stainless Appliances
- Tiled Backsplashes
- In-Home Washer/Dryer
- Kitchen Under Cabinet Lights
- Lofts and Two-Story Homes Available
- Balconies in Select Apartments

COMMUNITY AMENITIES

- Rooftop Lounge
- Rooftop Pool & Deck
- 24-Hour Concierge
- Clubroom Lounge with Library
- Mega Projection Screen in Lobby
- Huge Fitness Center
- Quiet Landscaped Courtyard with Resident Llamas
- Yoga Studio
- Gaming Area & Sports Simulator
- Garage Parking
- Electric Car Charging Stations
- Smart Phone Controlled Access
- Storage Apartments Available
- Bike Storage
- BBQ Grills
- Pet-Friendly
- Tesla Share with 



FOR LEASING AND TO SEE AN APARTMENT
PLEASE CALL: 833.693.0998 OR EMAIL: KILEYLEASING@UIPPM.COM

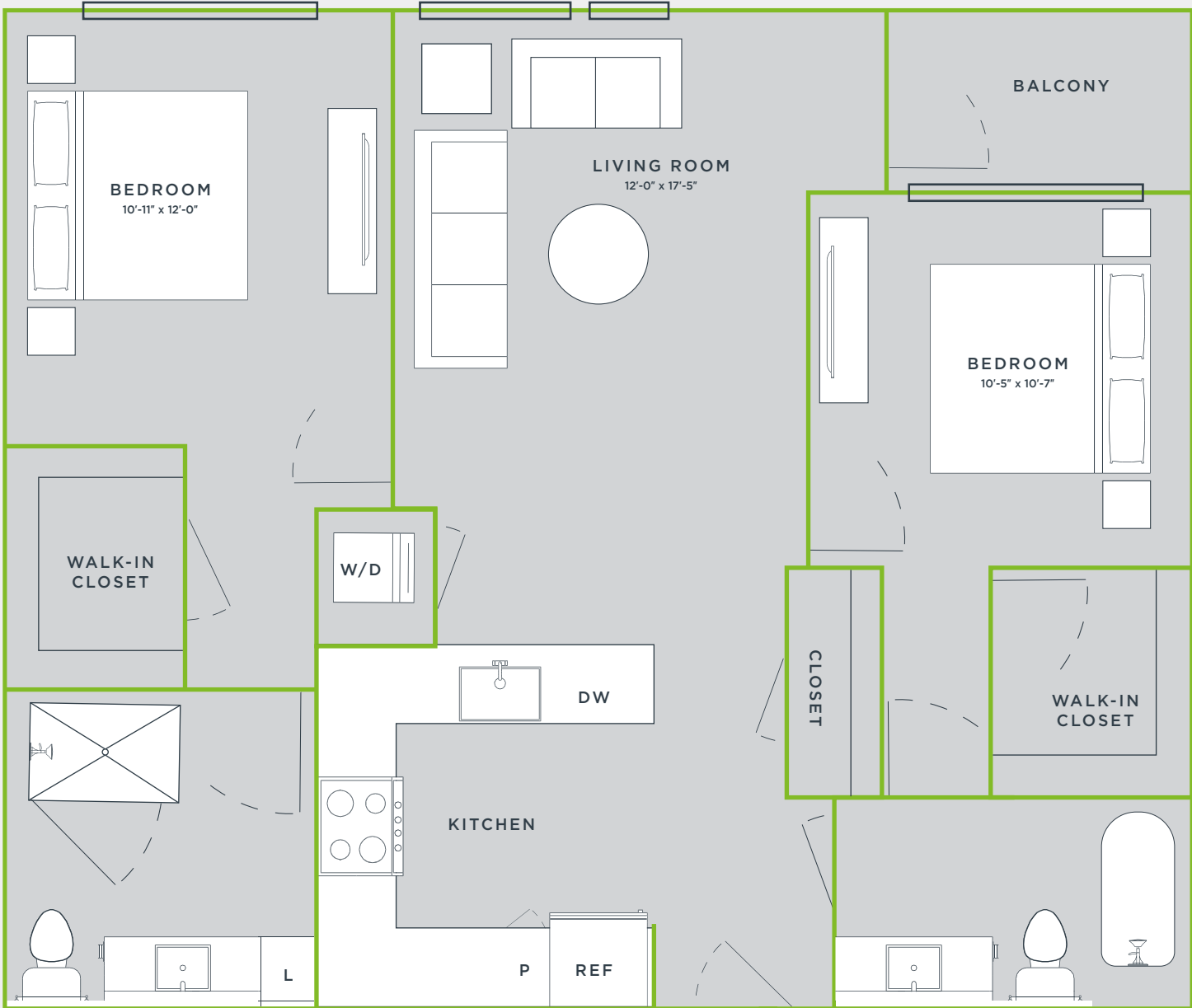




KILEY

HARBOR

1,007 SQUARE FEET
2 BEDROOM | 2 BATHROOM



All square footages are approximate. Pursuant to the District of Columbia Inclusionary Zoning program, income restricted units are available at this development. Please contact the Department of Housing and Community Development at www.dhcd.dc.gov regarding the availability of such units and requirements for registration in the Inclusionary Zoning program.

